

# **Scrutiny Inquiry Panel - Protecting, Preserving and Promoting The River Itchen in Southampton**

## **ADDITIONAL INFORMATION**

Thursday, 2nd March, 2023  
at 5.30 pm

### **ADDITIONAL INFORMATION RELATED TO THE LISTED REPORTS**

#### **Contacts**

Melanie Morley  
Democratic Support Officer  
Tel: 023 8083 2198  
Email: [Melanie.Morley@southampton.gov.uk](mailto:Melanie.Morley@southampton.gov.uk)

# ADDITIONAL INFORMATION

## PROTECTING, PRESERVING AND PROMOTING THE RIVER ITCHEN IN SOUTHAMPTON - EXPLORING GOOD PRACTICE

Presentations

# RIVER CLYDE DEVELOPMENT CORRIDOR

## Strategic Development Framework

Page 1

Agenda Item 7

## River Clyde SDF

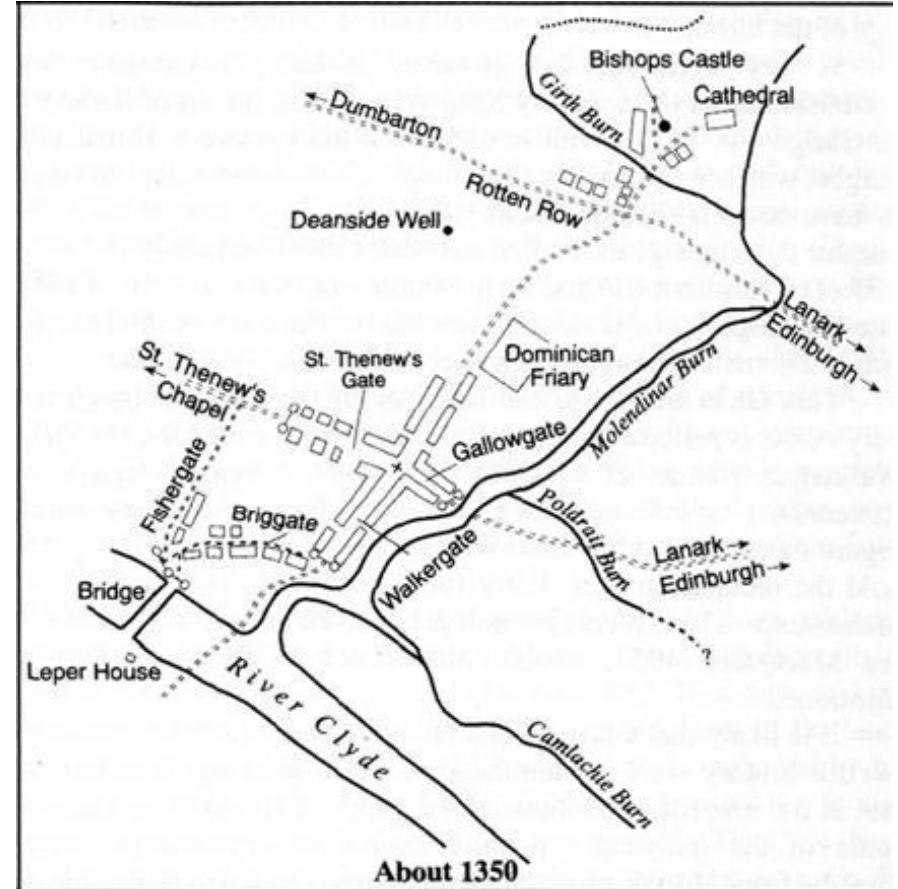
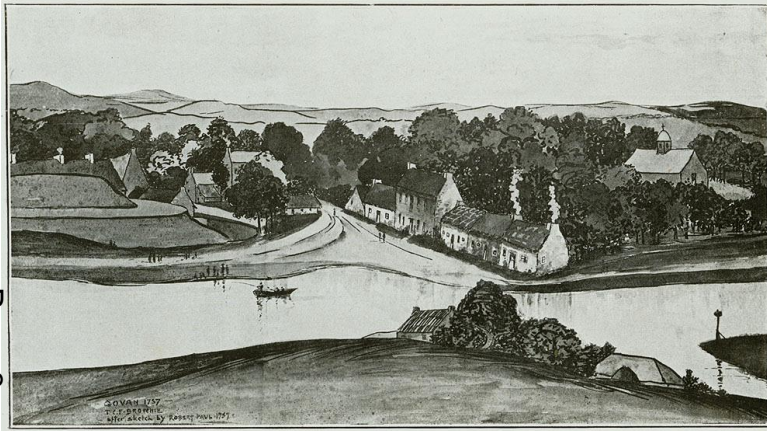
The importance of the river to Glasgow

Page 2



## A CITY EMERGES

Page 3



A world class city with a thriving and inclusive economy where everyone can flourish and benefit from the city's success.



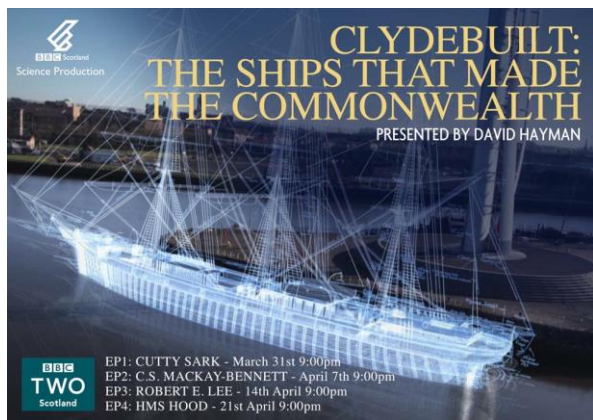
## A TRADING CITY



A world class city with a thriving and inclusive economy where everyone can flourish and benefit from the city's success.



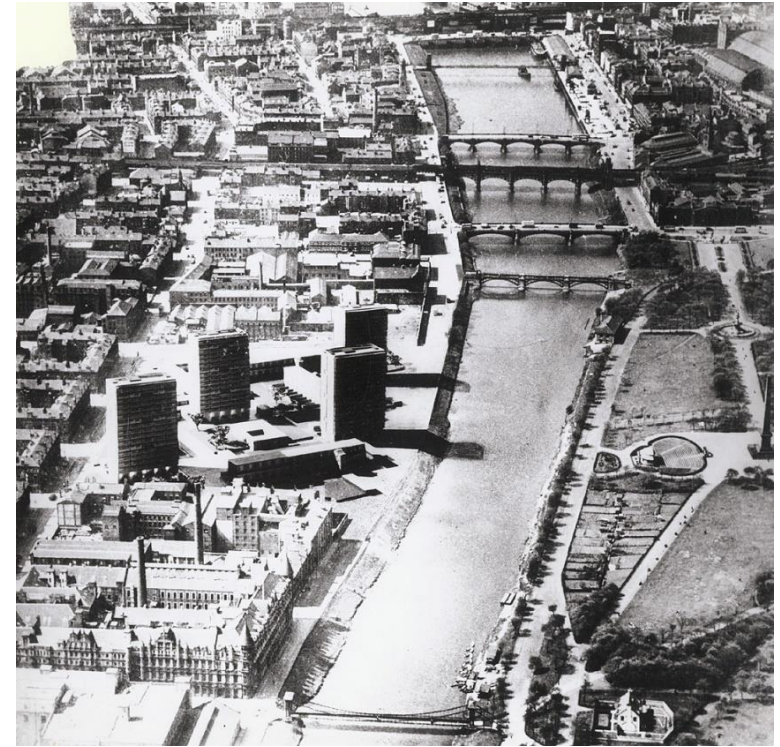
## CLYDEBUILT



A world class city with a thriving and inclusive economy where everyone can flourish and benefit from the city's success.



## LIVING AND WORKING



A world class city with a thriving and inclusive economy where everyone can flourish and benefit from the city's success.



## 'DOON THE WATER'



**THE POPULAR EXCURSION ROUTE**  
**GLASGOW AND LAND O'BURNS.**

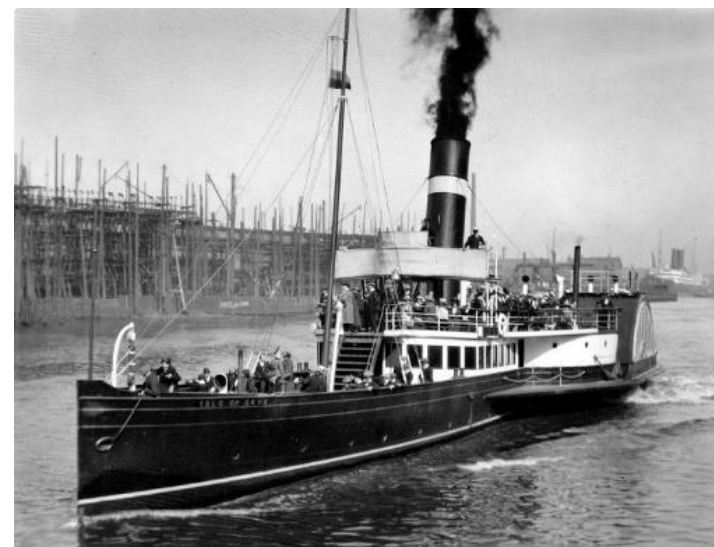
Page 7  
GREENOCK  
KIRN  
DUNOON  
LARGS  
MILLPORT  
ARDROSSAN  
AND  
TROON.

CARRIAGES  
FOR  
MONUMENT  
ON  
ARRIVAL  
RETURNING  
IN  
TIME  
FOR  
SAILING

THE NEW SALOON STEAMER.  
**"BONNIE DOON"**

SAILS DAILY FROM GLASGOW AT 7.A.M., RETURNING FROM AYR AT 2.30.P.M.

The advertisement features a central illustration of the steamship Bonnie Doon on the water. It is surrounded by various scenic views of the Glasgow region, including a landscape with a building, a church tower, and a coastal scene. The text is arranged in a decorative, banner-like format at the top and bottom, with a list of destinations on the left and a list of services on the right.



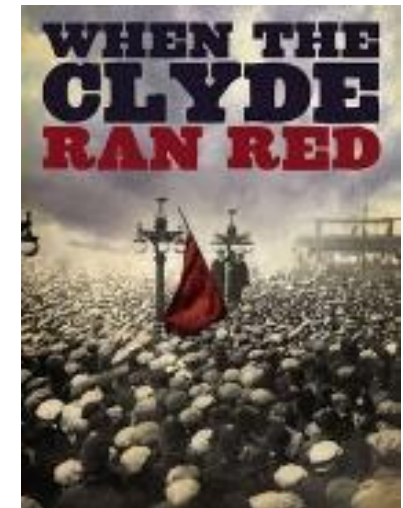
A world class city with a thriving and inclusive economy where everyone can flourish and benefit from the city's success.



## TURBULENT TIMES



Page 8



A world class city with a thriving and inclusive economy where everyone can flourish and benefit from the city's success.



## REINVENTION



A world class city with a thriving and inclusive economy where everyone can flourish and benefit from the city's success.



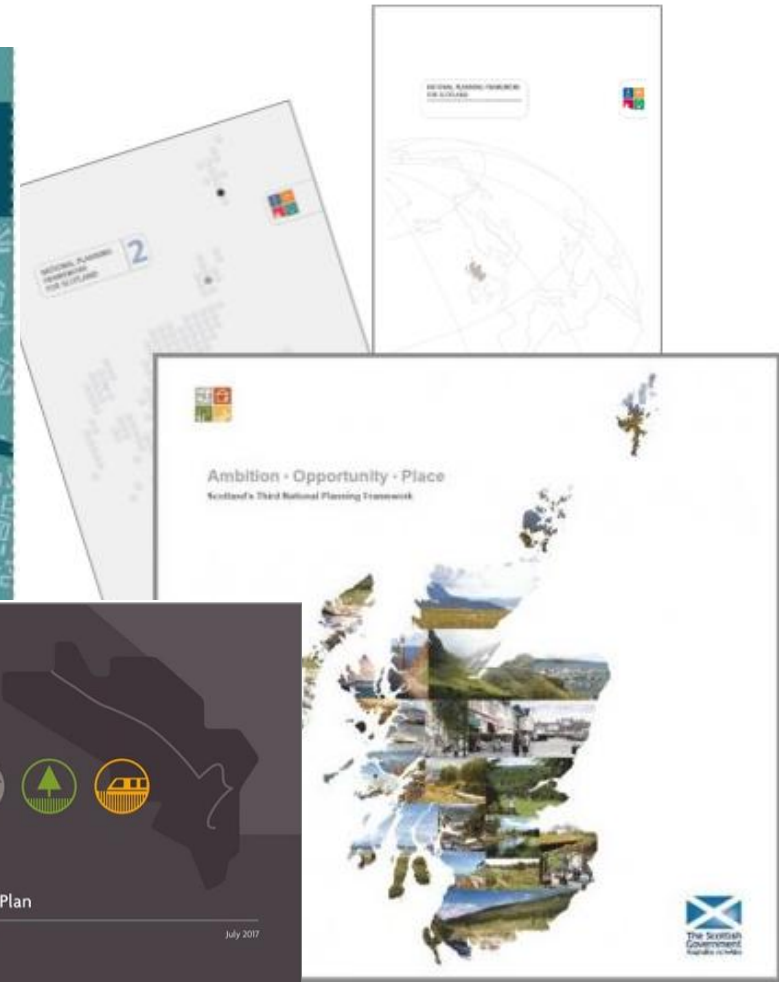
# River Clyde SDF

## WHY PREPARE A STRATEGIC DEVELOPMENT FRAMEWORK?

Page 10

## POLICY CONTEXT

Page 11

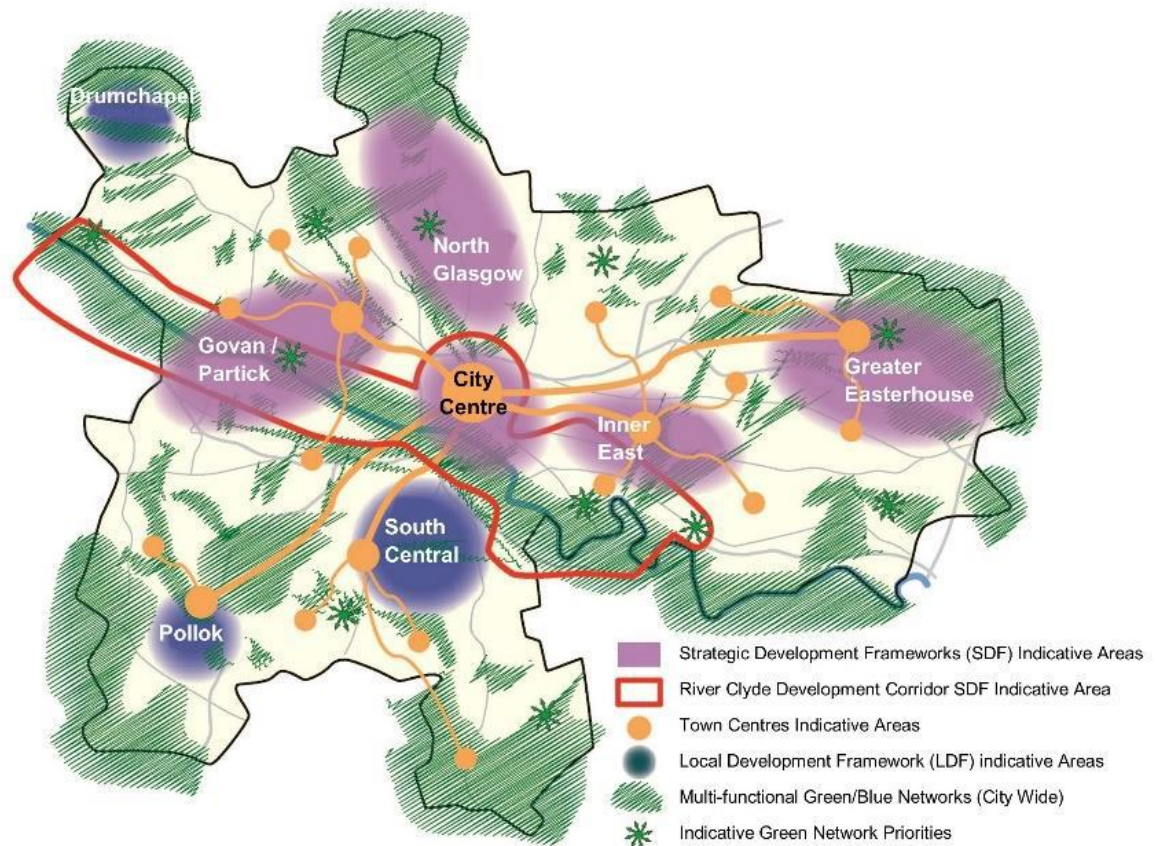


A world class city with a thriving and inclusive economy where everyone can flourish and benefit from the city's success.

## GLASGOW CITY DEVELOPMENT PLAN

### SG2: Sustainable Spatial Strategy

- 6 Strategic Development Frameworks
- 3 Local Development Frameworks





## SCALE OF POLICY

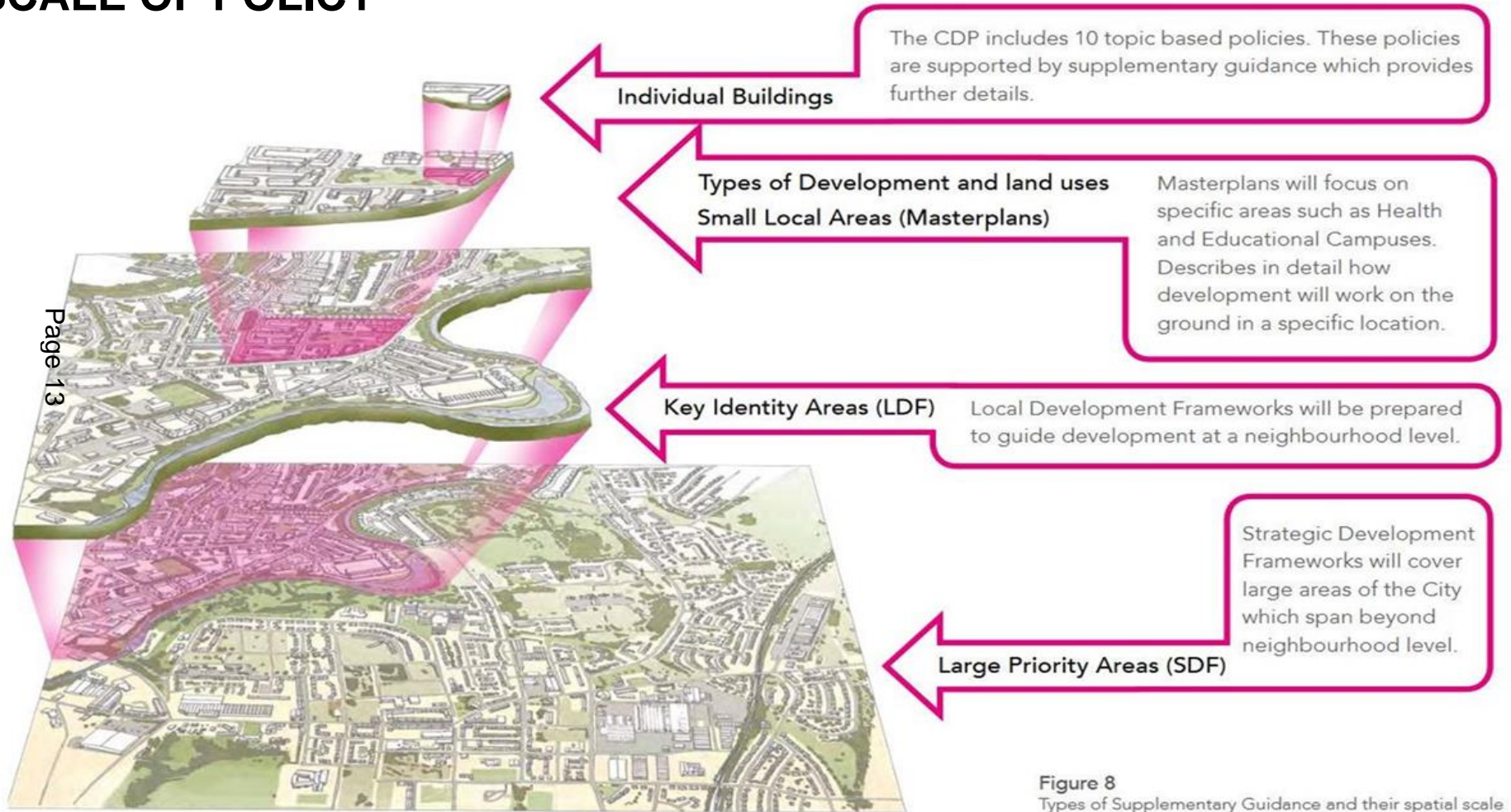


Figure 8  
Types of Supplementary Guidance and their spatial scale

# River Clyde SDF

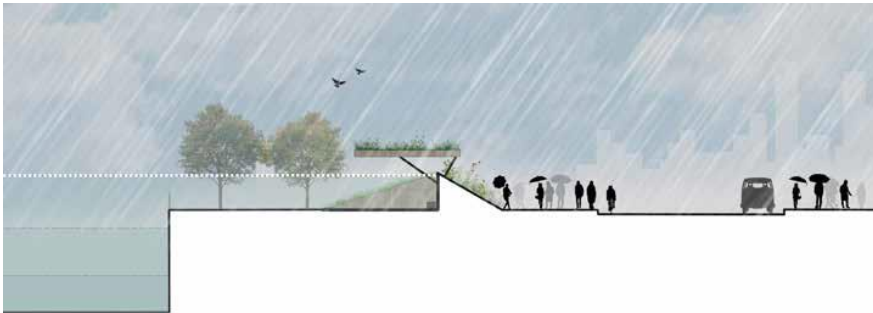
## CHALLENGES

Page 14



## FLOODING

The river within Glasgow is largely tidal, and although there have been no recorded coastal flooding events within the River Corridor, existing data shows that a 1:200 year flood event would result in the river over-topping quay walls at a number of locations.



## VACANT AND DERELICT LAND

Page 16



A world class city with a thriving and inclusive economy where everyone can flourish and benefit from the city's success.



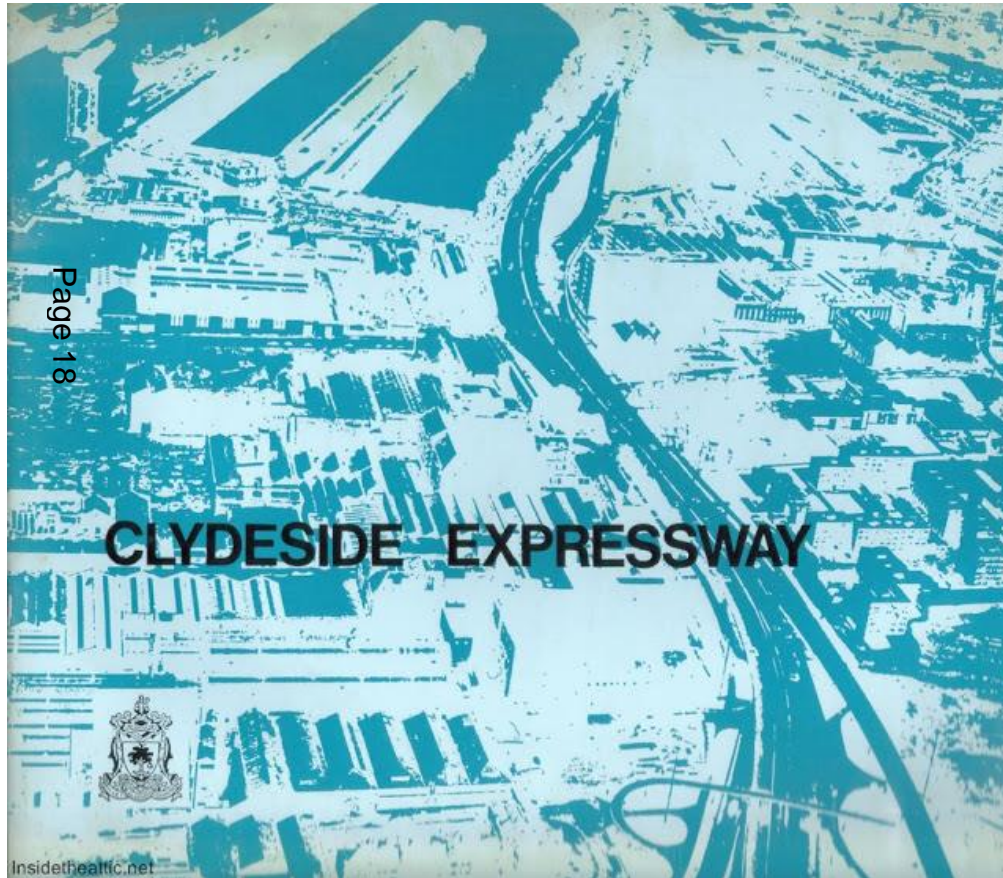
## QUAY WALLS



A world class city with a thriving and inclusive economy where everyone can flourish and benefit from the city's success.



## POOR CONNECTIVITY



A world class city with a thriving and inclusive economy where everyone can flourish and benefit from the city's success.

# River Clyde SDF

## PREPARATION AND ENGAGEMENT

Page 19



## ENGAGEMENT

- Govan Partick Charrette 2015
- River Area Character Appraisal
- External consultation between December 2018 and February 2019
- Over 200 comments received from a range of stakeholders
- The comments and recommendations helped shaped final SDF
- Three overarching priorities were identified

Page 20



## PRIORITIES

Recognising the River Corridor as a **major regeneration project** of regional and national significance.

**Unlocking sustainable development** along the River Corridor by addressing immediate challenges, and developing a long-term, **responsive approach to manage** the predicted increase in **flooding** in future years.

Promoting a **design-led, placemaking** approach to enhance and protect the townscape, heritage and environment of the River Corridor while **delivering a well-connected and liveable city**.

## River Clyde SDF

### VISION AND OUTCOMES

Page 22

## VISION

The River Corridor will be a **world-class destination**, with an **accessible waterfront** and **attractive spaces** where people want to spend time. It will be **climate-resilient** and support a **mix of uses**. New houses and flats will be linked to existing neighbourhoods. The **historic character** will be protected and enhanced, while **innovative design** will help create a distinct identity. It will form part of a wider network of urban waterways, will support **continuous walking and cycling routes**, and be celebrated as the city's **largest, continuous open space**.



A world class city with a thriving and inclusive economy where everyone can flourish and benefit from the city's success.



## OUTCOMES

### A VIBRANT RIVER

The River Corridor will be a **vibrant, attractive destination** which supports **inclusive economic growth**.

### A SUSTAINABLE RIVER

The River Corridor will **balance environmental, social and economic pressures** to create **liveable, inclusive and distinctive places**.

### A CONNECTED RIVER

The River Corridor will be **well-connected and link people, places and natural habitats**.

### A GREEN RIVER

The River Corridor will high quality **green, blue and grey infrastructure** that helps deliver climate change adaptation and **promotes health and wellbeing**.

# River Clyde SDF

## BALANCING COMPETING AMBITIONS

Page 25

## A VIBRANT RIVER

- Realise potential and unlock development
- Promote a new approach to growing the place
- Activate the water

Page 26



A world class city with a thriving and inclusive economy where everyone can flourish and benefit from the city's success.

## A SUSTAINABLE RIVER

- Support a higher density and a mix of uses
- Promote climate-responsive design
- Create a distinctive townscape, and protect and enhance historic character

Page 27





## A CONNECTED RIVER

- Create seamless walking and cycling routes
- Cluster activities and link people to jobs, town centres, services and public transport
- Bring people to the river

Page 28



## A GREEN AND RESILIENT RIVER

- Advocate climate readiness
- Create a network of open spaces
- Promote nature-based solutions

Page 29



A world class city with a thriving and inclusive economy where everyone can flourish and benefit from the city's success.

## River Clyde SDF

Where we are now

Page 30



## SDF ADOPTED 2022

### Delivery Mechanisms:

- Policy/Guidance
- River Park
- Infrastructure
- Studies/Masterplans
- Governance
- Attractors

Page 31



## Tidal River Clyde Flood Model

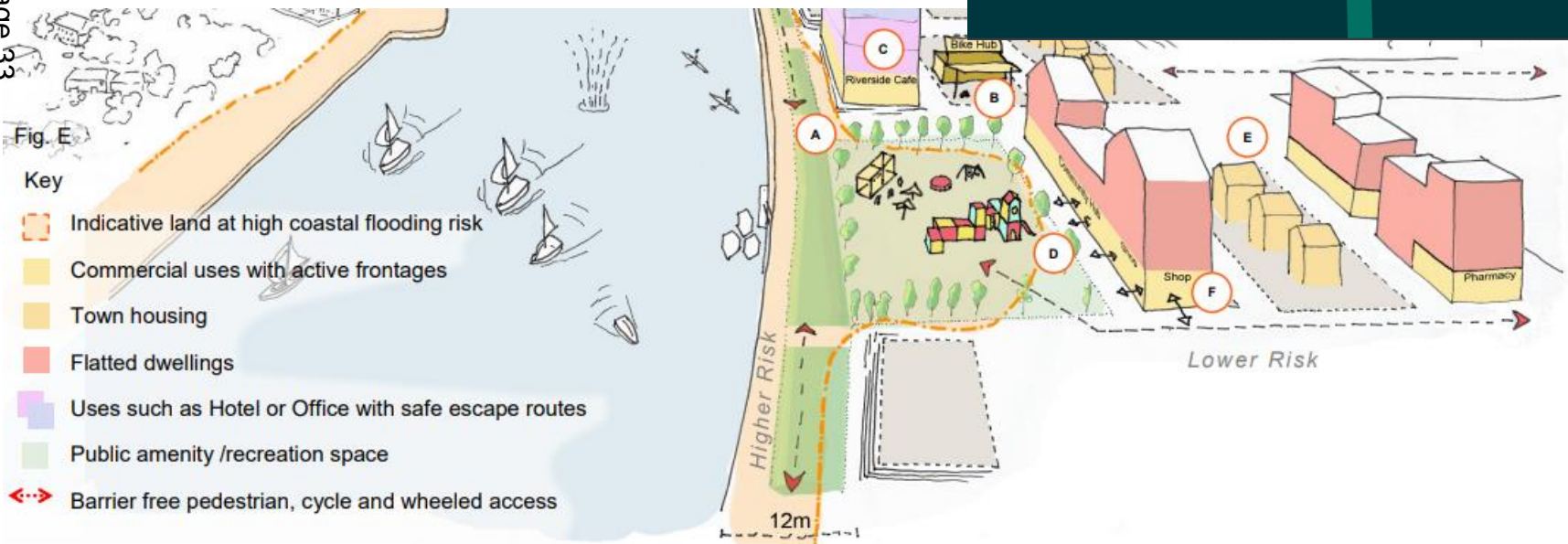
Predicted flood levels from the tidal model for cross-sections along the tidal reach to inform review of development sites. Landowners or developers seeking to assess flood risk for land along the tidal reach should:

- Page 32 Download the predicted flood levels table and plans, and assess against existing and proposed ground levels for their site/development.
- If, after this initial screening, the site is deemed to be within the functional flood plain, further, more detailed, analysis of flood risk for the site shall be undertaken using the Tidal River Clyde Flood Model.
- The model is currently managed by [Fairhurst](#) on behalf of Glasgow City Council.

## DESIGN GUIDANCE

- Process
- Core Principles and Guidance
- Tidal Clyde Development Flowchart

Page 33



A world class city with a thriving and inclusive economy where everyone can flourish and benefit from the city's success.

## RIVER ACTIVATION PROGRAMME

- Stimulating interest and engagement with the River
- Bringing activity to the river and animating the waterfront through temporary use
- Encouraging greater use of the River Corridor at different times of the day
- Engaging with local communities in the River Corridor and wider Glasgow City
- Improving access by local communities
- Supporting a healthy environment along the River through an enhanced natural environment

Page 34





## CITY DEAL INVESTMENT

- Access and integrity of the waterfront
- Developing economic role of the SEC/ Pacific Quay
- Links to University
- Govan - Partick Bridge

Page 35



A world class city with a thriving and inclusive economy where everyone can flourish and benefit from the city's success.

## RIVER PARK

- Development proposals to support the delivery of a continuous linear park
- Spaces should be multifunctional, safe and inclusive
- Design choices should prioritise climate resilience and support

Page 36





# THAMES21: WORKING IN PARTNERSHIP WITH COMMUNITIES AND STAKEHOLDERS TO TRANSFORM RIVERS

Page 37

**Debbie Leach – Chief Executive**



# THAMES21: CHAMPIONING THE THAMES AND ITS TRIBUTARIES



Page 38





# TAKING PRACTICAL ACTION

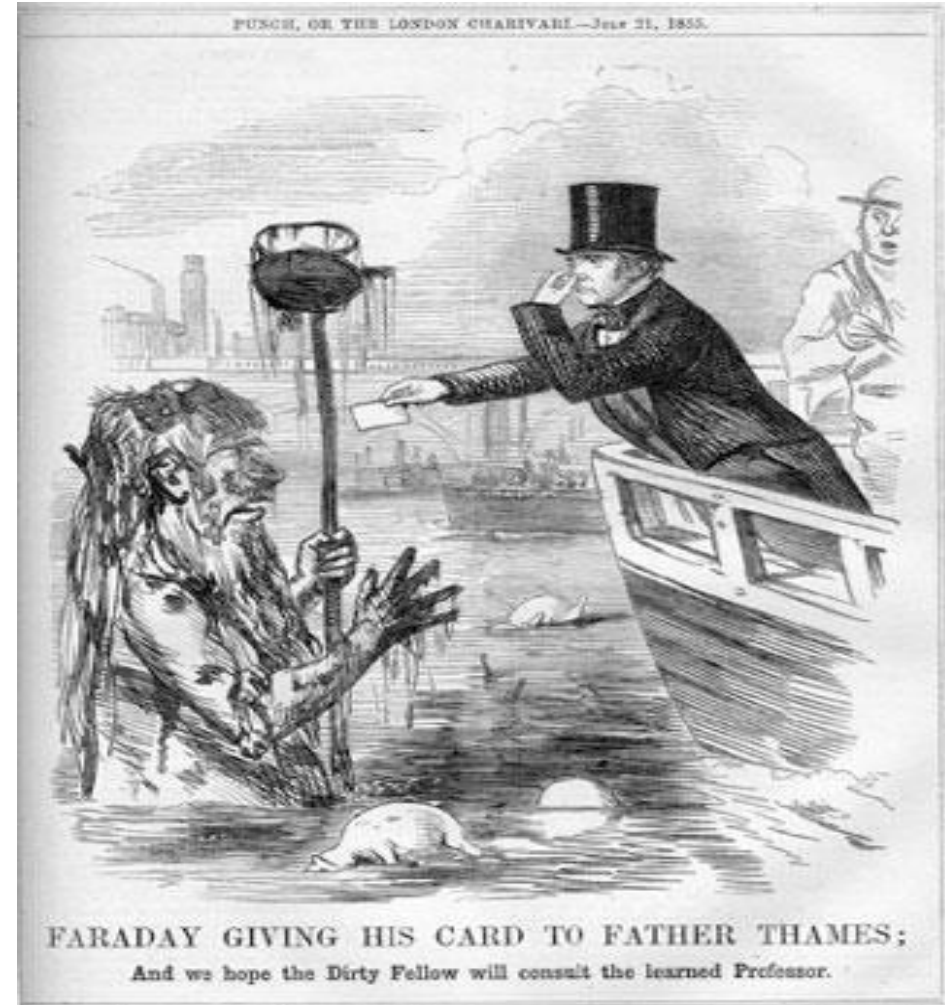
- Improving rivers across the city
- Tackling **pollution**
- Helping **wildlife** to **thrive**
- **Involving** community
- Educating **young people**
- Using practical **activities & volunteering** to **bring people together around the river**
- **Changing attitudes & behaviour**
- Inspiring **community pride** + ongoing river stewardship



# HISTORIC CHALLENGES FACES BY THE RIVER

“Filthy river, filthy river,  
Foul from London to the Nore,  
What art thou but one vast gutter,  
One tremendous common shore?  
All beside thy sludgy waters,  
All beside thy reeking ooze,  
Christian folks inhale mephitis,  
Which thy bubbly bosom brews.  
All her foul abominations  
Into thee the City throws;  
These pollutions, ever churning,  
To and fro thy current flows.”

Page 40





# NEW CHALLENGES OF LAST THIRTY YEARS





# MOUNTING COMMUNITY CONCERN



Page 42





# PARTNERSHIP PROJECT BETWEEN VOLUNTEERS AND THE PORT



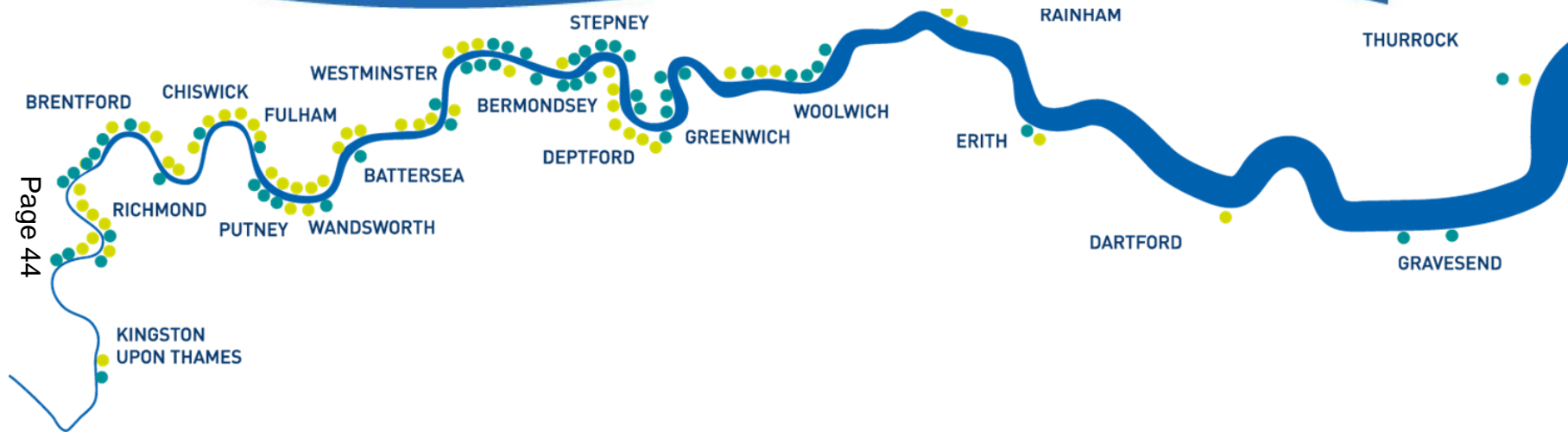
Page 43





# THAMES RIVER WATCH

## Understanding the health of the tidal Thames



Page 44



***A citizen science project training and supporting communities to investigate, better understand and evidence the environmental challenges faced by the river***



# USING ROBUST CITIZEN DATA TO INFLUENCE CHANGE





# USING A RANGE OF ACTIVITIES TO INSPIRE AND EMPOWER PEOPLE

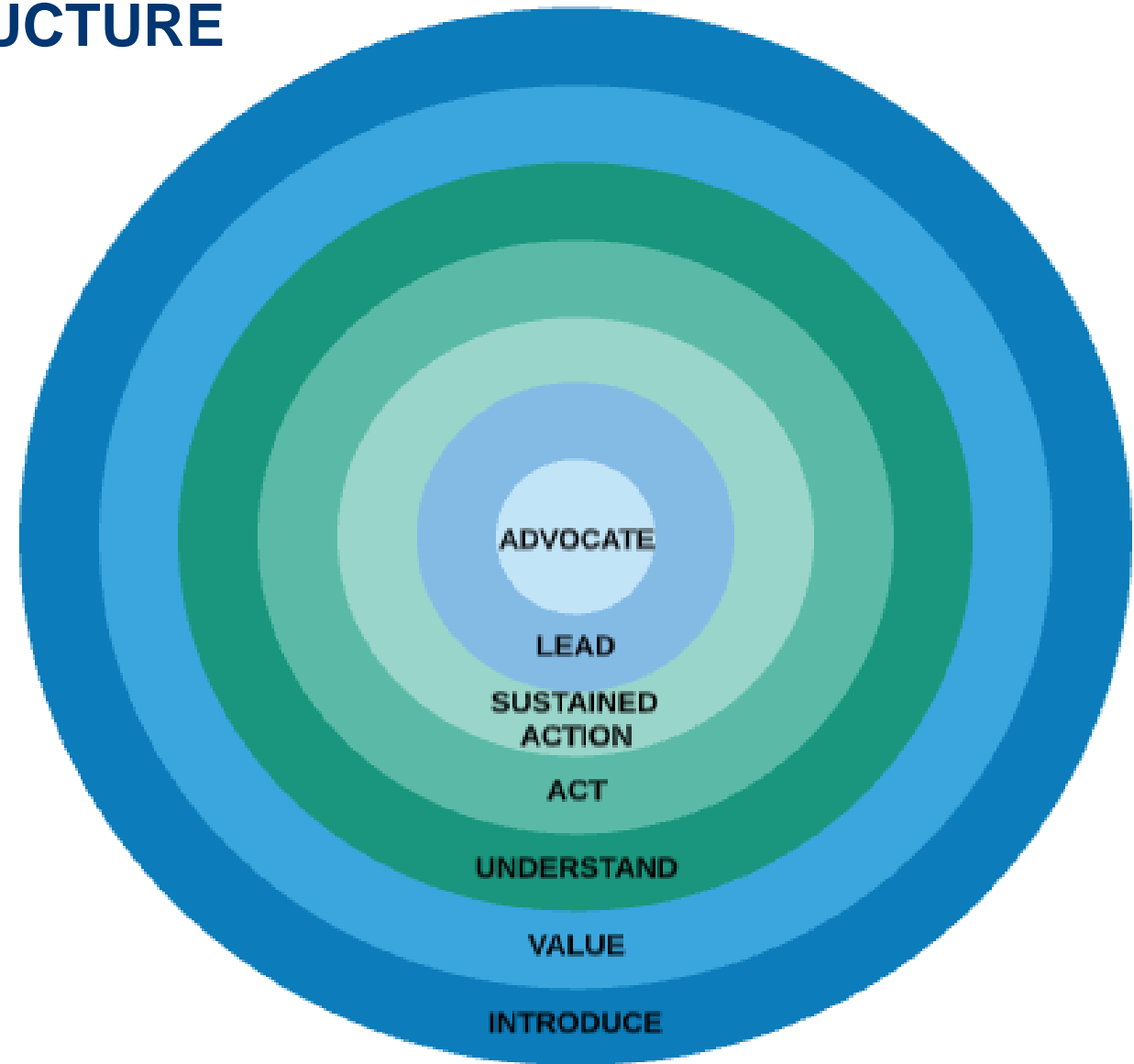




# THAMES21 ENGAGEMENT STRUCTURE

- **Introduce** oneself to the river
- **Value** the river
- **Understand** the river
- **Act** on behalf of the river
- **Sustained Action** on the river
- **Lead** action to protect the river
- **Advocate** for the wellbeing of the river and its communities

Page 47



# LEARNING AND UNDERSTANDING

Page 48





# TAKING ACTION

Page 49





# GATHERING EVIDENCE





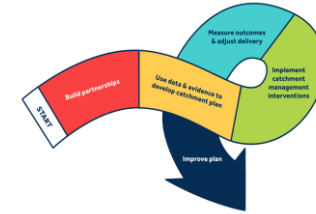
# SKILLS DEVELOPMENT: ACCREDITED TRAINING, SETTING UP AND SUPPORTING INDEPENDENT THAMES21 RIVER ACTION GROUPS



Page 51



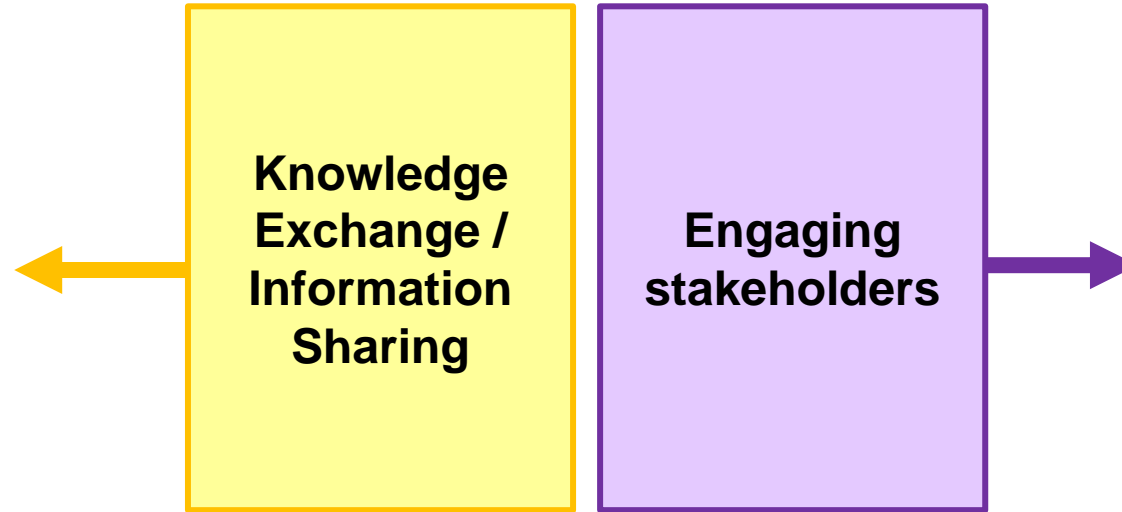
# DEVELOPMENT OF CATCHMENT PARTNERSHIPS IN RESPONSE TO EUROPEAN LEGISLATION



## 4. MEASURE OUTCOMES



## ADJUST DELIVERY



## 1. BUILD PARTNERSHIPS

## 3. IMPLEMENT INTERVENTIONS

- For projects
- For resilient catchment partnerships
- For host resilience



## 2. CATCHMENT ACTION PLAN



## DATA & EVIDENCE





# THAMES21 HOSTED CATCHMENT PARTNERSHIPS

4x HOSTED  
6x CO-HOSTED



Page 53





# HISTORIC CATCHMENT PARTNERSHIP FUNDING

## Part-funded through annual Environment Agency grants:-

- £15k for single catchment hosting
- Split for co-hosted partnerships (£7.5k per host for two host organisations)
- Reduced amount for sub-catchments (eg London Lea)

Page 54





# ADDITIONAL NEW FUNDING: THAMES WATER CATCHMENT PARTNERSHIP SUPPORT FUNDING (CAPS)

- **Five years of funding to develop catchment partnerships capacity** within Thames Water area
- Includes £10k **core host time funding** over 5 year period
- Plus funding to **develop partnership projects** in years two and three; and **deliver** in years four and five.



## LOCAL AUTHORITIES AND CATCHMENT PARTNERSHIPS

- **Catchment Plans** often have **close links** to **local authority goals**, for example:-
  - **Natural Flood Management**
  - **Improved access** to green/blue spaces
  - **Biodiverse, climate resilient** parks
  - **Sustainable Urban Drainage systems**
  - **Tackling identifiable (point) sources of pollution** in rivers and streams
  - **Tackling plastic pollution**
- **Catchment hosts** can be a **useful resource** for **local authorities** by helping them with **project development, consultation** and **funding applications**

Page 56



The Action for Silk Stream project was developed within the Brent Catchment Partnership and is being led by Harrow and Barnet Councils





# WORKING IN PARTNERSHIP WITH LOCAL AUTHORITIES: EXAMPLE: LONDON BOROUGH OF ENFIELD



- **Benefits to London Borough of Enfield:-**
  - Access to additional funding sources for project delivery
  - Building stronger links with local communities
  - Enabling greater/ wider outcomes to be achieved
- **Benefits to Thames21**
  - Access to additional funding sources for project delivery
  - Political support
  - Landowner buy-in & direct contact to specific local authority teams
- **Successful partnership making best use of each organisation's key strengths:**
  - Enfield – design, construction, strategic planning
  - T21 – community engagement, water quality expertise, securing funding

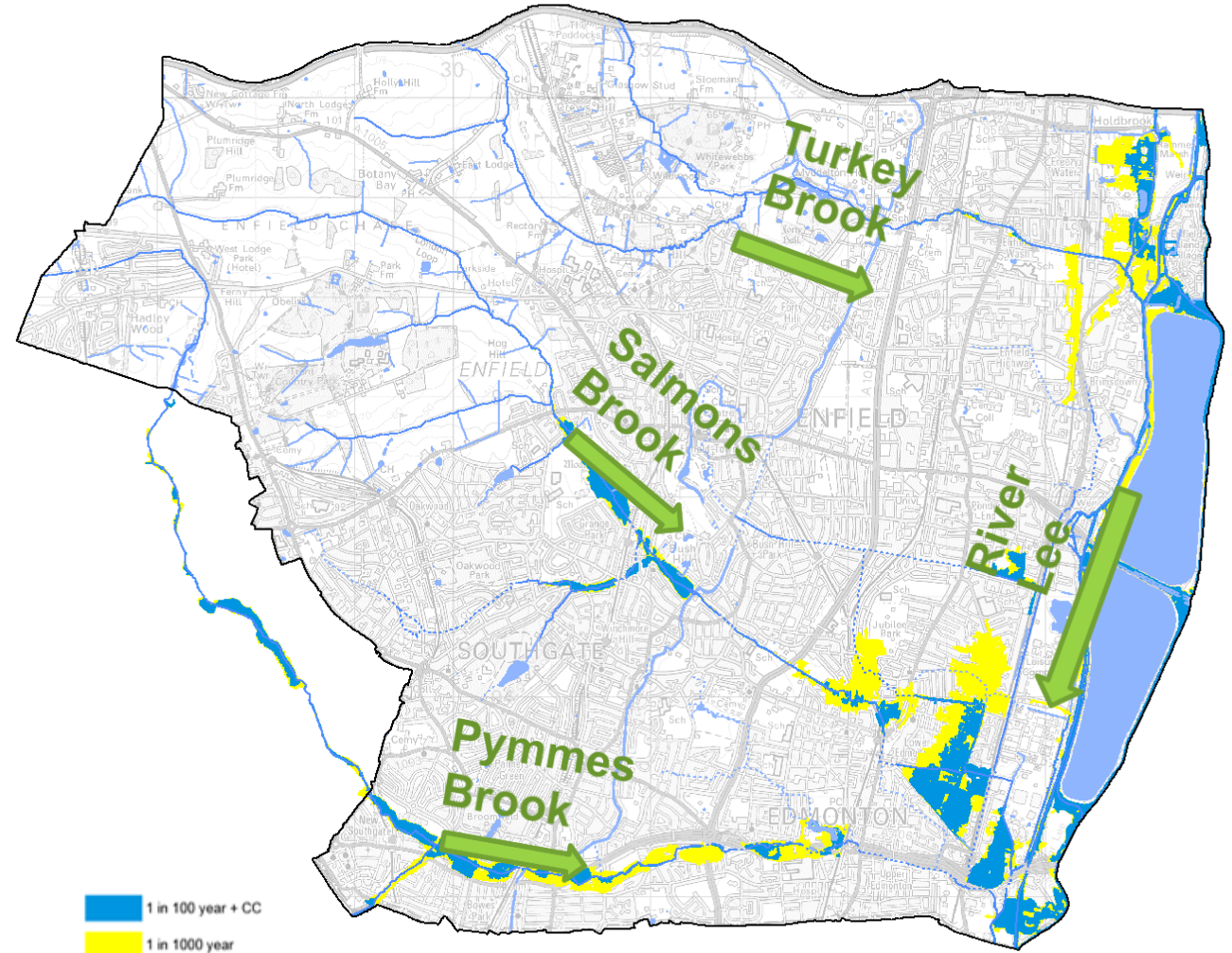
Page 57



# CASE STUDY: SALMONS BROOK NFM PILOT

- Flooding in 2000 affecting 192 properties
  - £15.3 million spent on EA flood alleviation scheme
  - Yet some areas still remain at risk
- NFM investigation launched to seek ways low cost solutions can complement traditional hard engineered flood defences

Page 58





# SALMONS BROOK NFM PILOT

- Funded through **Thames RFCC, EA, LB Enfield**
  - **Community engagement**
  - **Opportunity mapping**
  - **Fundraising**
  - **Environmental improvement**
  - **Monitoring**
- **Restoration of Enfield Chase**
  - **Woodland creation**
  - **Rural Sustainable Drainage systems**
  - **River Restoration**
  - **Landscape Recovery**

Page 59





# CASE STUDY – FIRS FARM WETLAND

- **30,000m<sup>3</sup> flood storage space** for £900,000
- Funded by **EA, Thames Water, LB Enfield, GLA, TFL**
- Establishment of **Friends of Group**
- **Outdoor classroom** facilities





## FUTURE CHALLENGES:-

- **Maintaining momentum after Brexit** – will river and water environments slide down the government agenda??
- **Tackling the impacts of the Climate Emergency** – expanding activity and co-ordinating with others **across the Thames River Basin**
- Need for **all sections of the community** to be involved for success – across diverse
- urban and rural populations

Page 61



## IN THE LAST 5 YEARS THAMES21 HAS:-

- Organised **36,000+** volunteering opportunities
- Directly engaged **100,000+** people with their local river
- Involved **44,000+** children in educational activities
- Championed + expanded urban delivery of **integrated constructed wetlands**
- Introduced new **web of reedbeds** across canalised London water courses
- Established **Natural Flood Management** to protect **urban communities**
- Delivered **innovative new evidencing work** on ability of **Nature Based Solutions** to reduce river pollution
- **Led the sector in analysing and using data** on road pollution of rivers
- Removed **1000+** tonnes of rubbish from the River Thames alone
- Developed **nationally-accredited technical courses** for volunteers







# **SOLENT FORUM**

## **- Coastal Partnership -**

### **March 2023.**

Karen McHugh – [karen.mchugh@hants.gov.uk](mailto:karen.mchugh@hants.gov.uk)

[www.solentforum.org](http://www.solentforum.org)



# Contents

- Background
- Staff
- Membership
- Core Services
- Groups
- Specific members services
- Projects and events
- Externally funded project support
- Horizon planning





# Background (1)

## **Aims of the Solent Forum**

1. To promote, facilitate and support integrated planning and sustainable management of the Solent
2. To provide a broad based consultative forum

## **Objectives of the Solent Forum**

1. To raise awareness and understanding of the members' roles and aspirations
2. To improve sharing of the information base
3. To facilitate better communication, consultation and liaison
4. To raise awareness and understanding of the human and natural changes likely to materially affect the Solent area and its interests
5. To promote the national and regional importance of the Solent in policy, development and plan making
6. To raise awareness and understanding of the impacts of Climate Change on the Solent and appropriate mitigation, resilience and adaptation measures

# Background (2)

- Covers Selsey Bill to Chewton Bunny (Hampshire/Dorset border) in the New Forest and the North shore of the Isle of Wight
- Multi-sector membership
- Steering Group to help lead the work programme
- Non-profit making organisation.
- Core Service
- 3 Sub-groups
  - Natural Environment Group
  - SEMS Scheme of Management
  - Bathing Water Quality Awards
- Work carried out via a business plan





# Solent Forum Staff

- Peter Barham – Solent Forum Chair
- Karen McHugh – Solent Forum Manager
- Kate Ansell – Solent Forum Officer



# Solent Forum Members

## LOCAL AUTHORITIES

- Chichester District Council
- Eastleigh Borough Council
- Fareham Borough Council
- Gosport Borough Council
- Hampshire County Council
- Havant Borough Council
- Isle of Wight Council
- New Forest District Council
- New Forest National Park Authority
- Portsmouth City Council
- West Sussex County Council

## HARBOUR AUTHORITIES

- Associated British Ports
- Beaulieu River Management
- Bembridge Harbour
- Chichester Harbour Conservancy
- Cowes Harbour Commissioners
- River Hamble (HCC)
- Langstone Harbour Board
- Lymington Harbour Commissioners
- Portsmouth Commercial Port
- Kings's Harbour Master, Portsmouth
- Yarmouth Harbour Commissioners



# Solent Forum Members

## OTHER ORGANISATIONS

- ABP
- APBmer
- Angling Trust
- Blue Marine Foundation
- BP Oil UK Ltd
- British Marine Aggregate Producers Association
- Boskalis Westminster
- Carcinus
- Environment Agency
- Final Straw Foundation
- Haskoning DHV Ltd
- Hampshire & Isle of Wight Wildlife Trust
- Hampshire and Wight Trust for Maritime Archaeology
- Natural England
- Marina Projects Ltd
- Mackley
- National Oceanography Centre
- Royal Society for the Protection of Birds
- Royal Yachting Association
- Solent Protection Society
- Southern and Sussex IFCAs
- Southampton Solent University
- Solent Gateway
- Portsmouth University
- Southampton University
- UKSA
- Vectis Boasting and Fishing Club
- Westminster Dredging Co. Ltd
- Wightlink
- Winchester CC
- WWF

# Core Services

- Bi-annual Steering Group meeting of key partners.
- Bi-annual conference style meetings
- Bi-annual Solent News publication
- Monthly E Newsletter (c. 400 recipients). Twitter like/retweet relevant information – 396 followers.
- Extensive website
- Student Mike Clark Bursary Awards - call for projects each April 2023. Five awarded in 2022.
- Solent Information Database – ongoing population as part of our news service. Please send your research/reports to us for inclusion.





# Sub-Groups

- **Solent Marine Sites (SEMS) Secretariat** Kate Ansell
  - Online survey of activities takes place in March/April
  - Annual Management Group meeting in September
  - Annual Management Report – published to SEMS website
  - SF Officer has regular telecoms with other national MPA Officers
  
- **Natural Environment Group** Karen McHugh
  - Meetings in April and September . Discussions will take place on actions arising from SEMS Annual Survey and Management Report
  - Key project for NEG = Solent Seascapes Project Working Group to produce Solent Pressure and Activity Mapping (delivers Solent Bird Sensitivity and Activity Mapping Project)
  - Three projects funded 2022/23. Fathom Ecology, Intertidal Seagrass Restoration in the Solent; HCC Recoding Snipe on coastal site using one thermal imager; HCC equipment to capture Snipe at Lymington/Keyhaven
  - Call for NEG funding for 2022/23 due February 2023
  
- **Bathing Water Quality Awards** Karen McHugh
  - 2023 awards underway and will be published March 2023.

# Members Services

- **Clean Solent Shores and Seas**

Hub to signpost a range of issues and sectors to improve water quality in the Solent. Sections now complete on: Littering, Microplastics, Nutrients, Governance, Habitats/Species and Boating. Next section to finalise – Amenity and Public Health and Marine Invasive Species

- **Building Biodiversity in the Solent Hub**

Information hub to collate work in the Solent (and nationally) on improving the biodiversity of coastal infrastructure. SF keeping up to date with national work on this topic, including attendance of the Marineff working group (national group promoting this topic being led by Bournemouth University).

- **Habitat Restoration Hub**

Collating information and links on habitat restoration initiatives such as REACH and ReMeMare, Local Nature Recovery Strategies, natural capital, blue carbon, Solent seagrass and net gain.

- **Solent Plastics Pollution hub**

Initiated as part of the Environment Agency's Preventing Plastics Pollution Project. SF will maintain web resources and Facebook page until 2028.

[www.solentforum.org](http://www.solentforum.org)





# Projects and Events

- Beneficial use of Dredgings in Solent (BUDS)

Phase 2 complete. Phase 3 – Bottom Placement of dredgings project commenced April/May 2021. Project due to be completed March 2023. Phase 4 – Saltmarsh Restoration requires funding.

- Solent Marine Recovery

Solent Forum has led a series of meetings with key stakeholders to assist with the joining up of the marine space with the forthcoming 3 Local Nature Recovery Strategies being produced by Hampshire County Council, West Sussex and Isle of Wight. A webpage has been produced and a scoping document drafted to assist. [Solent Forum - Solent Nature Recovery Scoping](#)

- Solent Marine Invasives and Biosecurity Planning

Working with Natural England, APEM Ltd and the Marine Biological Association to raise awareness of marine invasives in the Solent and developing biosecurity measures.

3 workshops planned - Book online via the Forum's website. [Solent Forum - Biosecurity Workshops](#)

1. Portsmouth: 15<sup>th</sup> March at the Royal Maritime Club
2. Southampton: 22<sup>nd</sup> March at the National Oceanography Centre
3. Isle of Wight: 30<sup>th</sup> March at the UK Sailing Academy

[www.solentforum.org](http://www.solentforum.org)



# Externally Funded Project Support

We can provide letters of support, stakeholder engagement services and web hosting for externally funded projects. Current projects supported include (lead partner in brackets):

- Dynamic inventory of seascape restoration activities in the Solent to Sussex Bay area (University of Portsmouth) 3Cs funded project. Jan to March 2023. Solent Forum is a partner in this project and will help design the inventory database to be hosted on the SF website.
- Preventing Plastic Pollution in the River Itchen Estuary (Environment Agency) - 5 years commenced 2023.
- Three Harbours technical summit (Southern Water). Ongoing.
- Solent Seascapes (Blue Marine Foundation). From 2022 to 2027.
- Valuing Marine Biodiversity for use in Decision Making (University of Portsmouth). Nov 2022 to August 2025.
- Solent Cluster (Solent LEP).
- Solent Water Quality and Boating (Environment Agency and Natural England). Ongoing, ad hoc.



# Horizon Planning

Environment Act/25 year plan environmental targets for biodiversity on the land and in the sea, water and air quality and resource efficiency and waste reduction. Sea/river targets:

- Improve riverine health by **reducing nutrient pollution and contamination** from heavy metal sources as well as improving water use efficiency
- **Stop the decline in wildlife populations** through legally binding target for species abundance by 2030 with a requirement to increase species by 10% by 2042
- Requirement for **Local Nature Recovery Strategies** – this will help inform strategic net gain targets
- The Environment Act also puts a key focus on driving towards nature’s recovery and new proposals
- **Net Zero Strategy** to decarbonise all sectors of the UK economy in order to reach net zero emissions by 2050. This was also a widely discussed climate goal at COP26 last autumn.
- Plans to Pilot Highly Protected Marine Areas (**HPMAs**)

# Horizon Planning

## Key Issues in Members Survey 2022/23

1. Water quality and catchment management
2. Habitats and species
3. Ports, harbours and shipping
4. Fisheries and aquaculture
5. Joint cultural and heritage, marine industry, flood and coastal erosion risk management

Natural England highlighted priorities from members survey 2022:

- Small scale habitat loss
- Coastal eutrophication and algal mats on the intertidal
- Nutrients
- Invasive non-native species (INNS)
- Access to updated evidence



# Thank You



This page is intentionally left blank